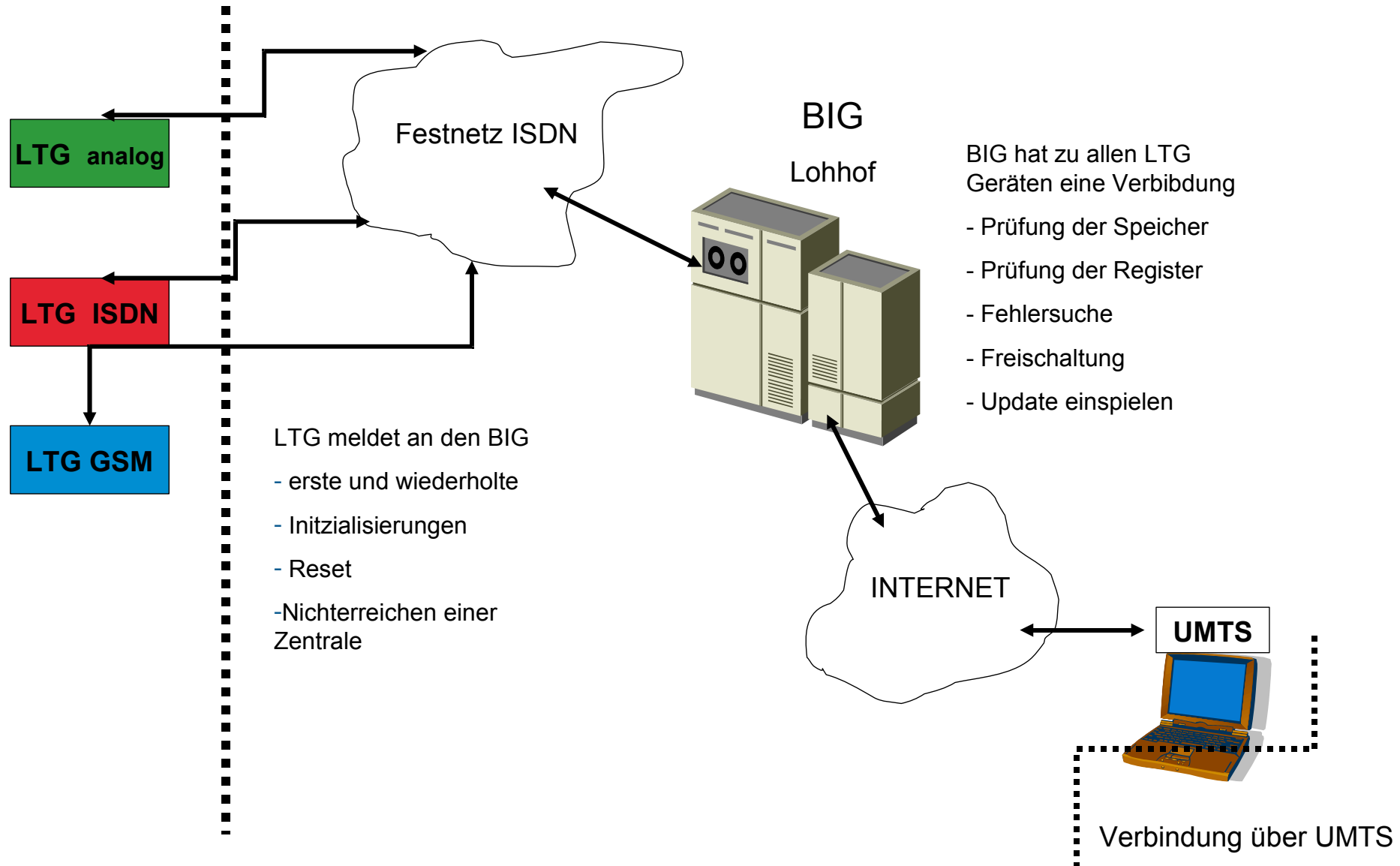
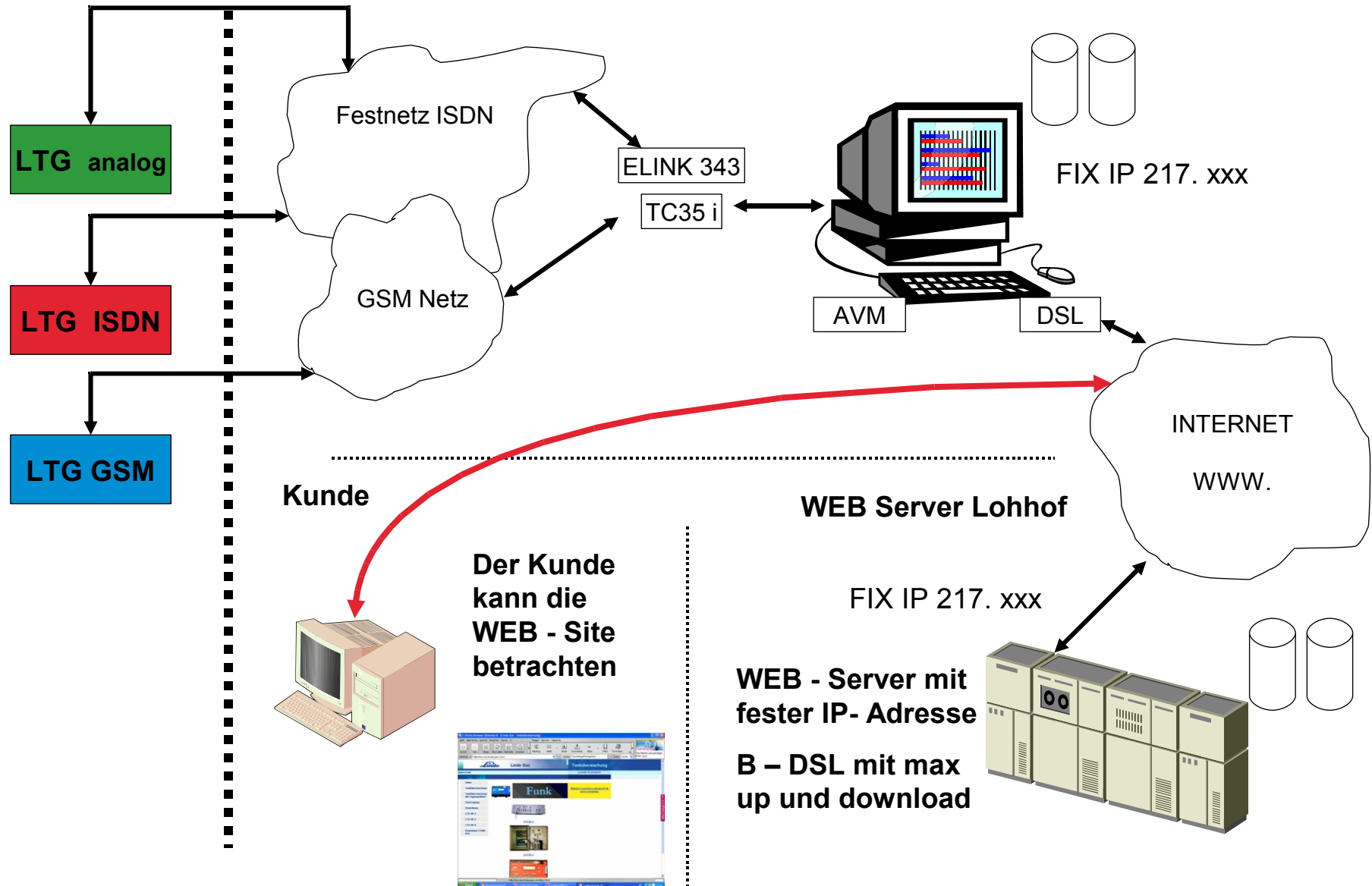
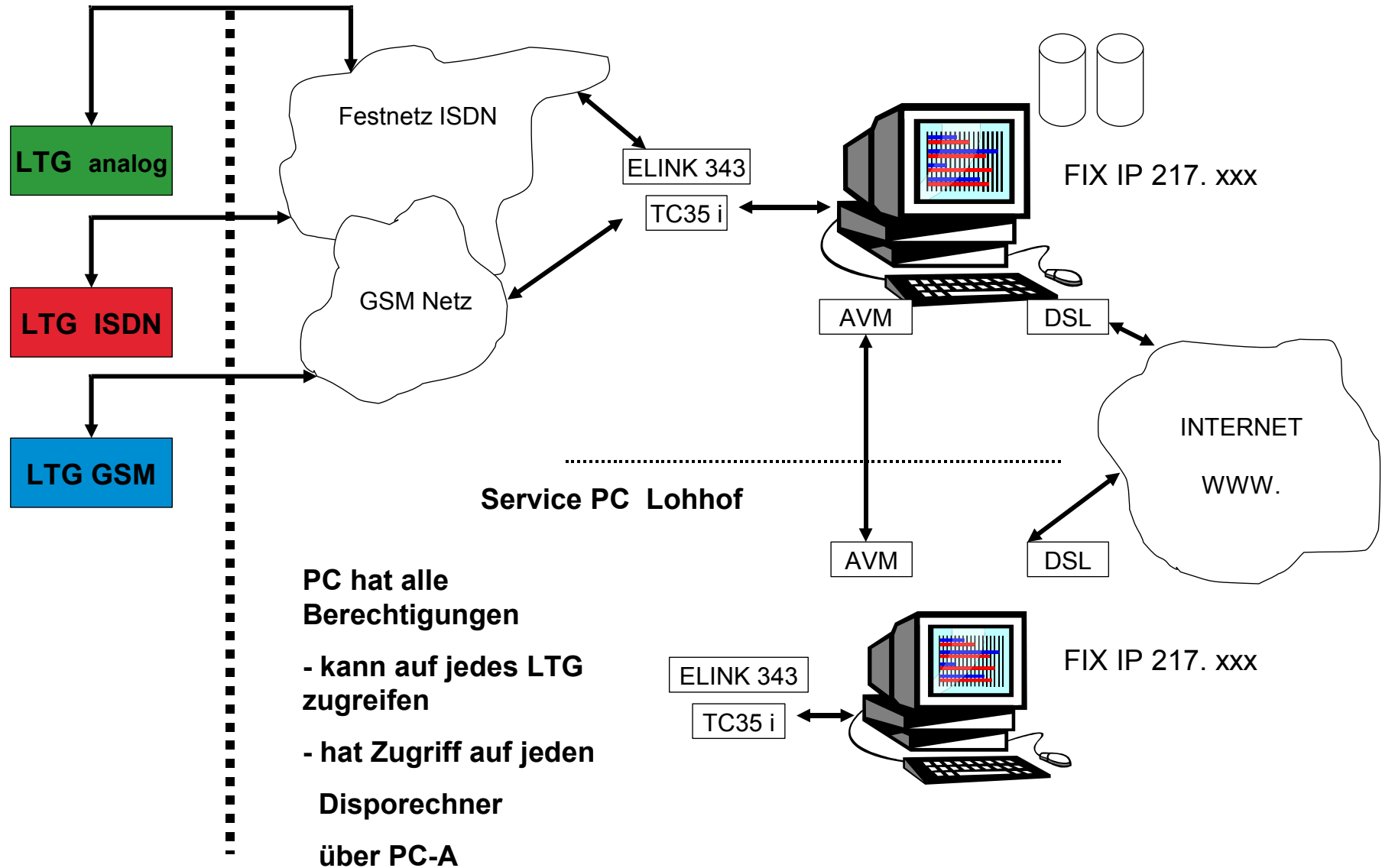
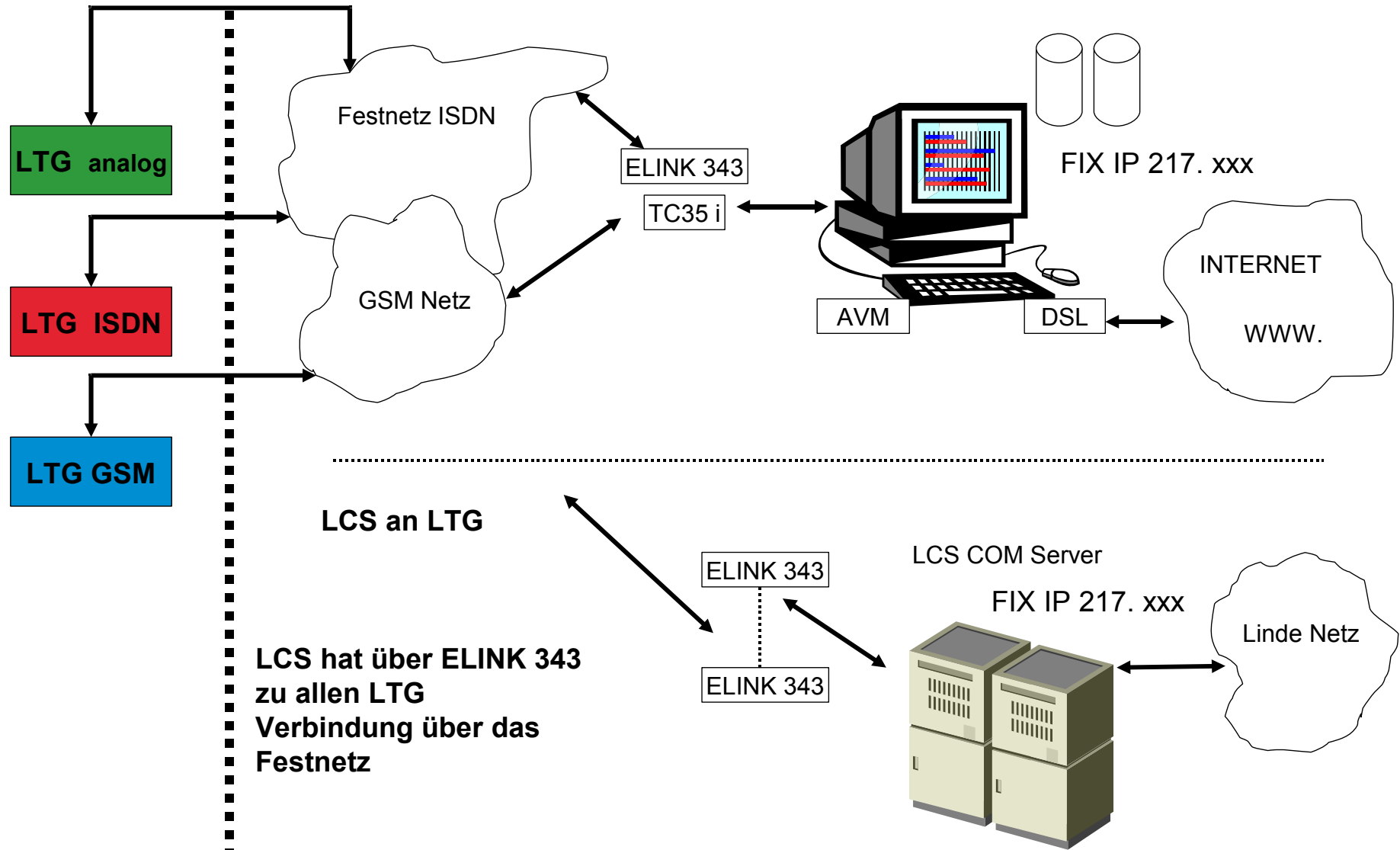


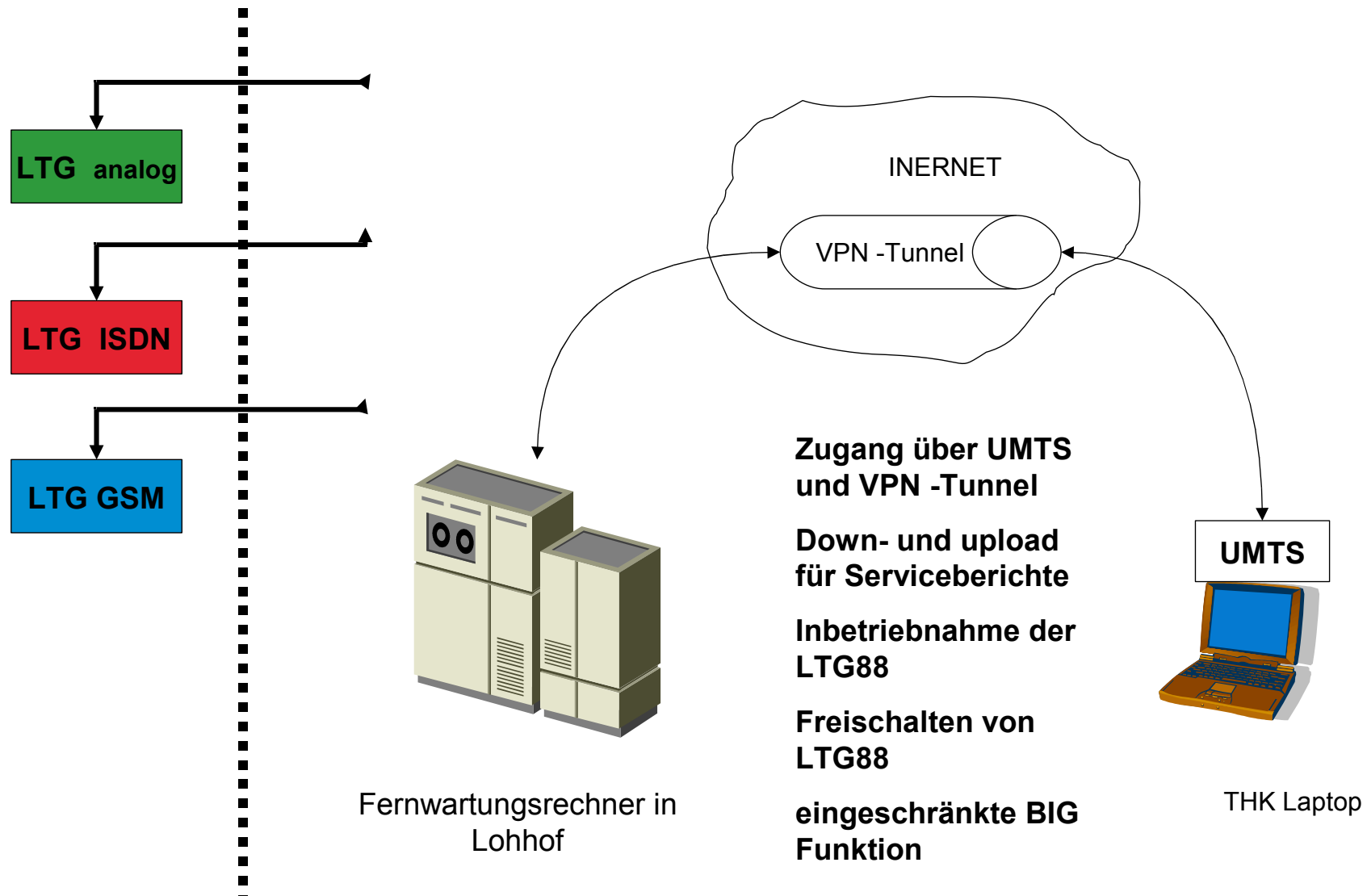
Übersicht LTG88 Installation

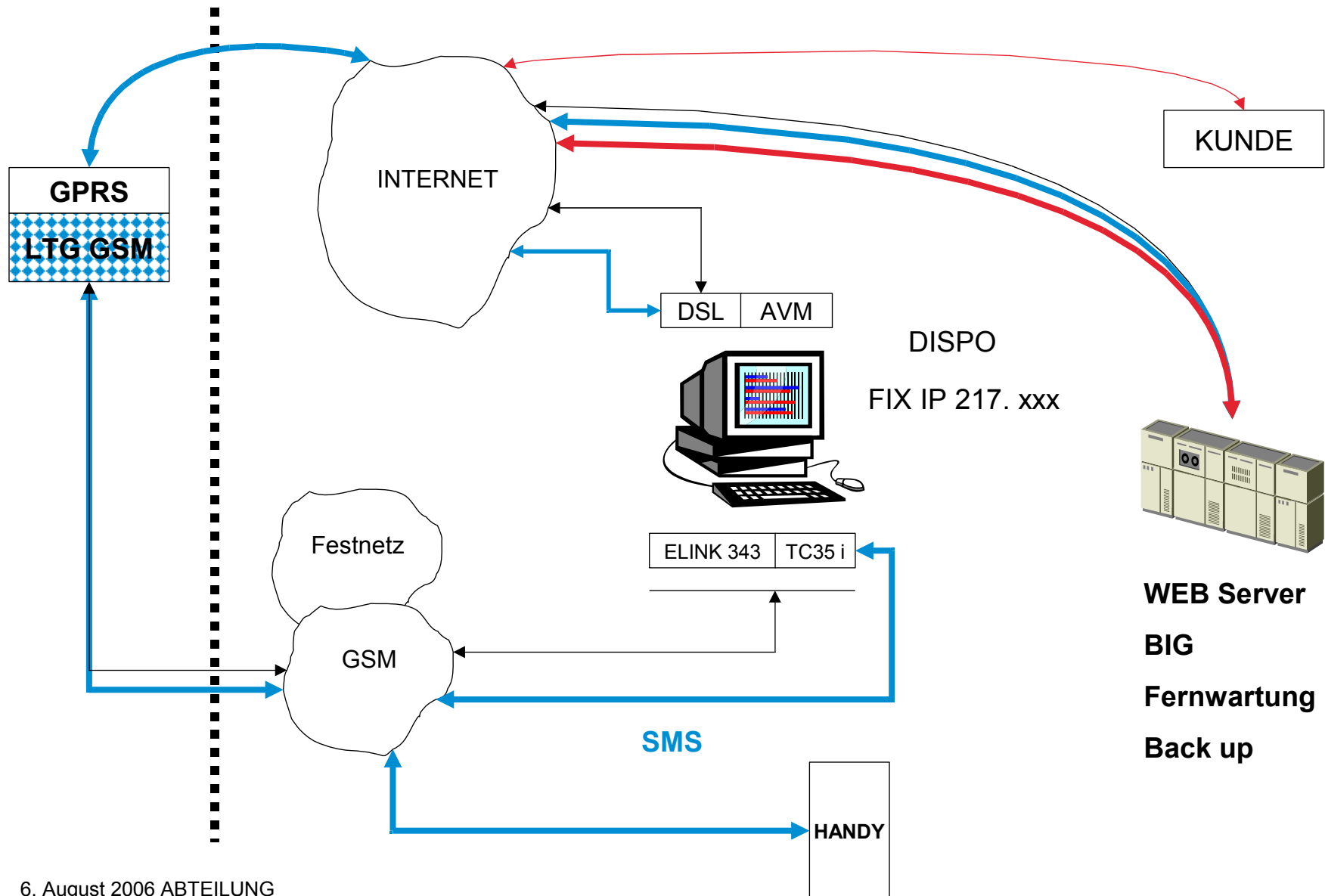


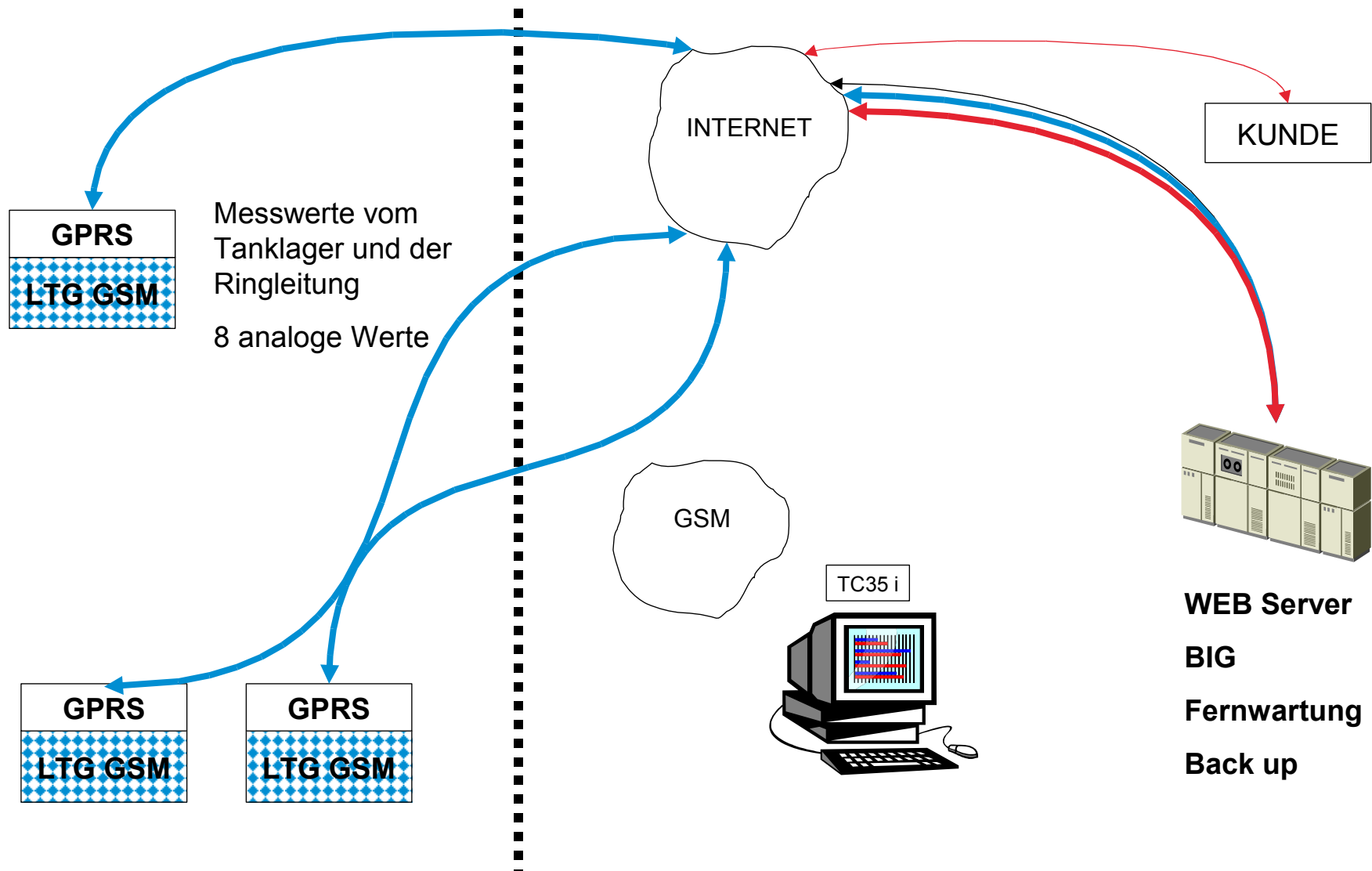


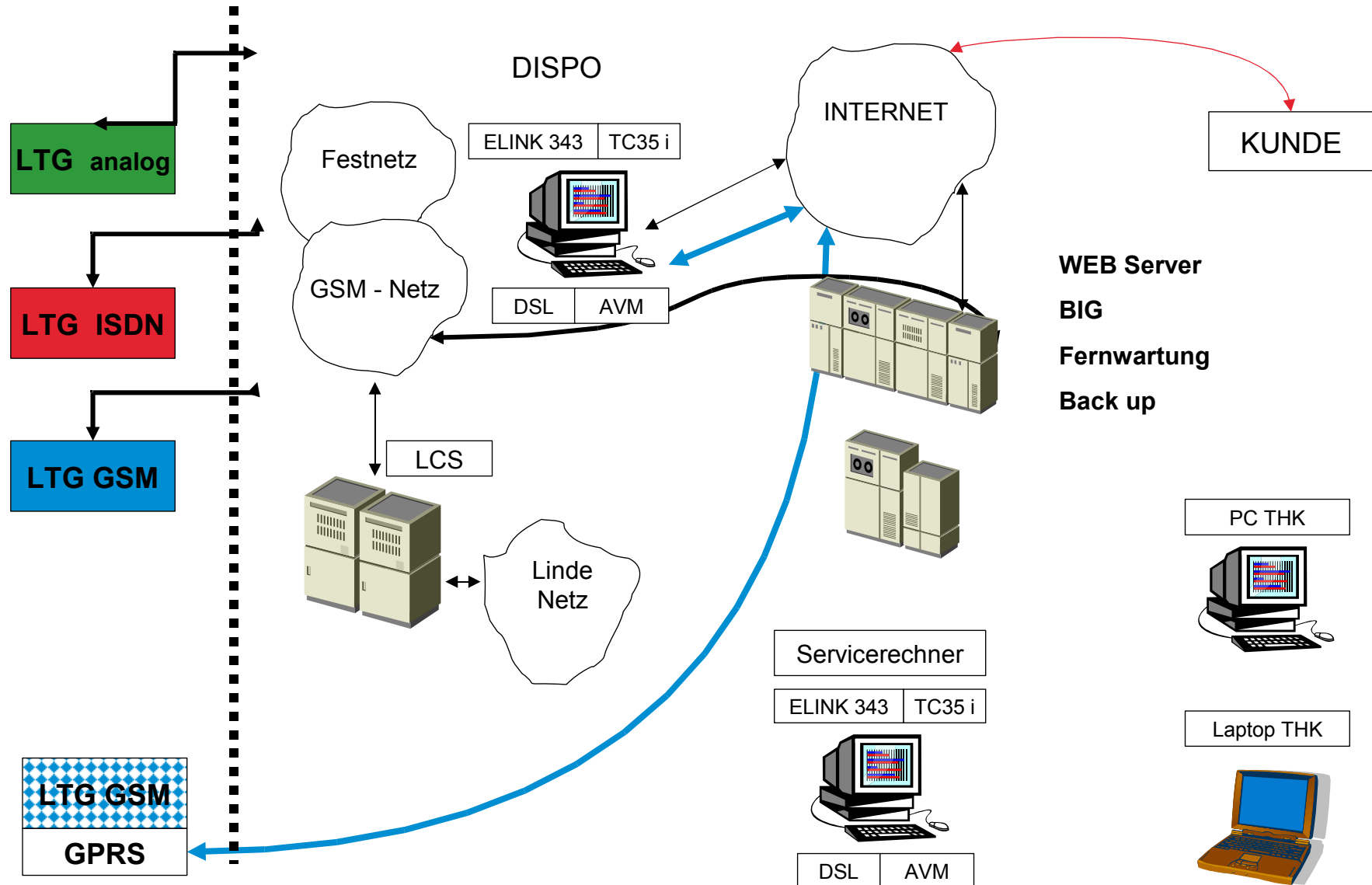






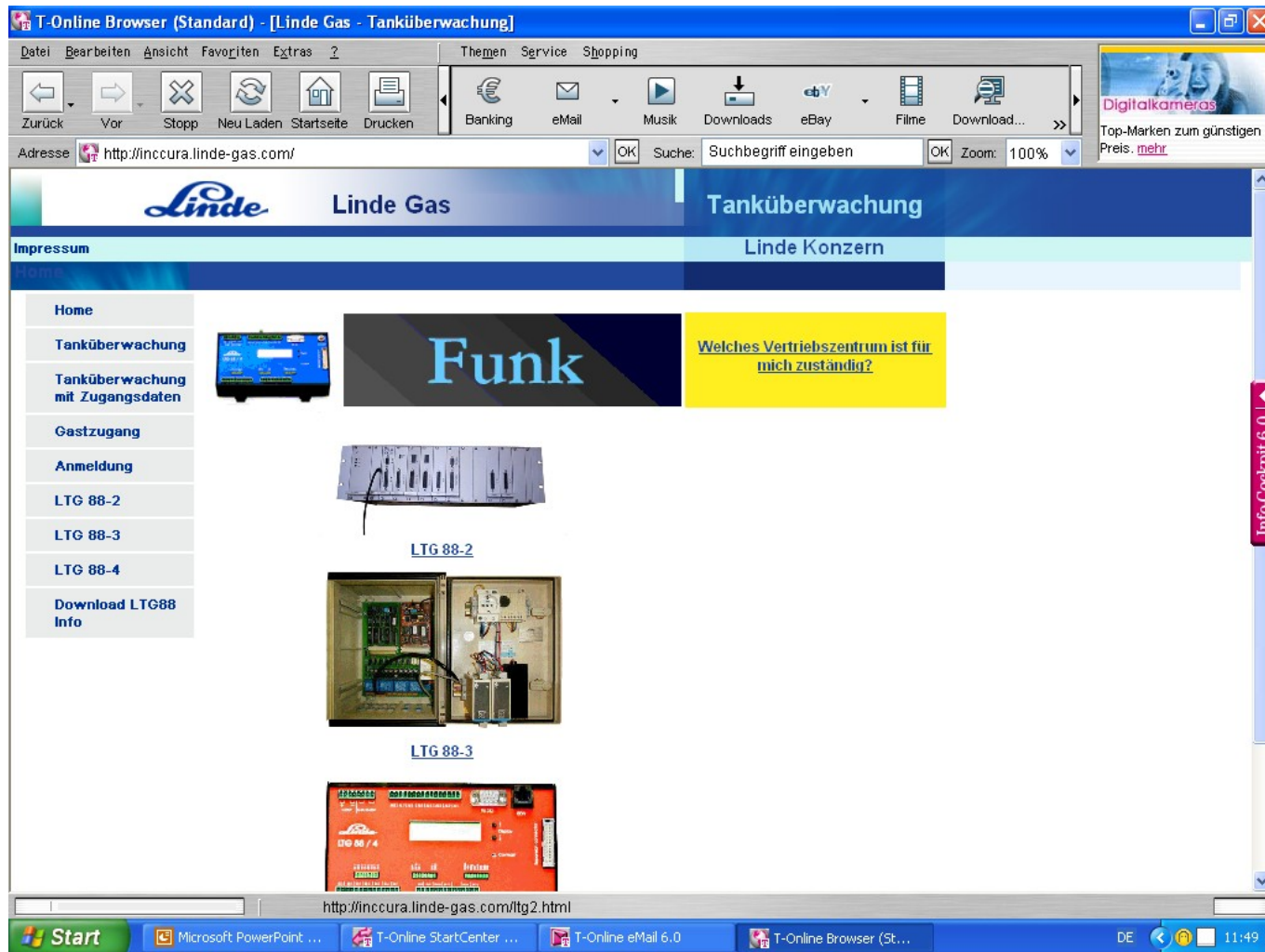


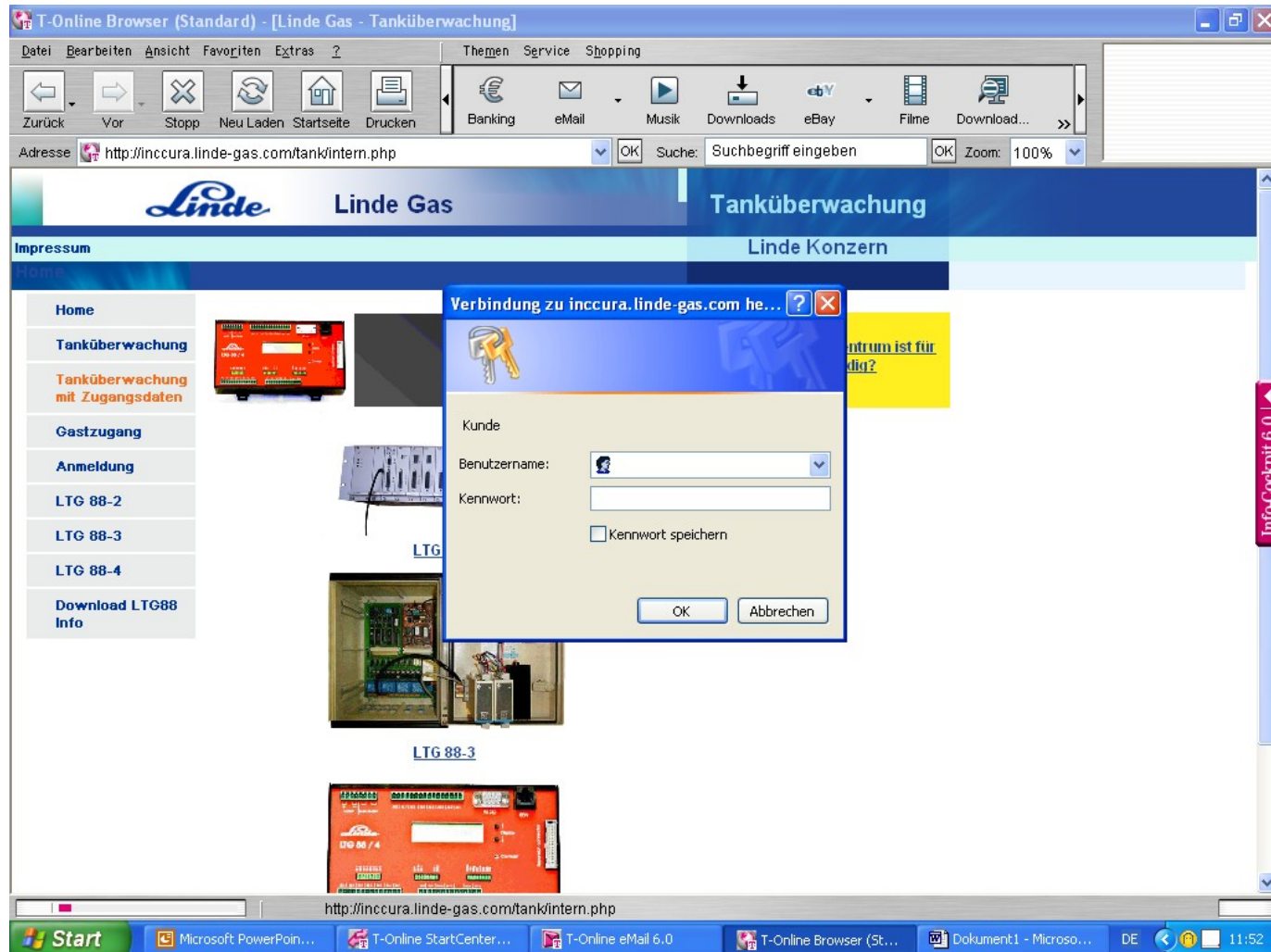





LTG mit GSM MODEM


- Auch für die GPRS Verbindung geeignet
- GPRS Anmeldung erfolgt über einen GSM Anruf vom Handy oder der DISPO - Zentrale durch absenden einer SMS
- Ein Zweiter Anruf Initialisiert das LTG mit allen Daten der Zentrale und der Messstelle
- Gleichzeitig wird nun auch die IP – Adresse von dieser Zentrale übermittelt
- nach diesem Vorgang befindet sich das neue LTG (Messstelle) im Netz
- es werden nun Daten vom LTG an die Zentrale gesendet
- ebenso die Ereignisse als Alarime
- Die Zeiteinstellung ist variabel





T-Online Browser (Standard) - [http://inccura.linde-gas.com/tank/intern.php]









Adresse  http://inccura.linde-gas.com/tank/intern.php OK Suche: Suchbegriff eingeben OK Zoom: 100%



Tanküberwachung LTG88

| Firma | Strasse | PLZ | Stadt |
|--|---------|-----|-------|
| <div> <div>BMW FIZ</div> <div>Anfordern</div> </div> | | | |

[Prüfprotokoll](#)

| Statistik | Export | Kanal | Bezeichnung | D/A | Wert | Einheit | Letzte Änderung |
|---|---|-------|---|--------|---------|---------|---------------------|
|  |  | 1 | Mischer SL | Analog | 21.400 | % | 2005-11-06 11:03:00 |
|  |  | 2 | Analogkanal | Analog | 0.000 | --- | 2005-01-01 00:00:00 |
|  |  | 3 | Analogkanal | Analog | 0.000 | --- | 2005-01-01 00:00:00 |
|  |  | 9 | gas nr 7 links C3H8 in N2 1600ppm 2,5/5.0 | Analog | 143.150 | bar | 2005-11-06 11:03:00 |

Start | lkg | Präsentation2 | T-Online Start... | T-Online eMail 6.0 | T-Online Brows... | Dokument1 - Mi... | DE | 11:55

